

Venturing into Philly:

A student's guide to enjoying the City of Brotherly Love

By Calista Condo
Photo Editor

Across the Delaware River sits a city full of fun experiences to be had. Philadelphia is a unique and historical city that has something to offer everyone and it is just a short train, bus or car ride away. It is a great place to go for a day trip, even if you are a college student on a tight budget. Here are a few ideas how to enjoy a day in Philadelphia for less than \$35.

Museums

After your short train, bus or car ride to Philadelphia ends, a world of opportunity awaits you. On the far west end of Center City lie the Philadelphia Museum of Art, the Franklin Institute and the Mutter Museum. All three are educational, interesting, and fun.

The Museum of Art has three floors of modern, classic and ancient art. It is open every day of the week from 10 a.m. until 5 p.m. and is located at the end of the Ben Franklin Parkway. It only costs \$8 with a valid student I.D.; on Sundays, it is donation only.

About two blocks away on 22nd Street is the Mutter Museum. If you like the weird, unusual and somewhat gut-wrenching, this museum is the place to go. Although small, it contains two floors of scientific oddities, mutated fetuses and horrifying medical apparatuses. The Mutter Museum's hours and cost are the same as the Museum of Art's.

Just a walk down the Ben Franklin Parkway is the Franklin Institute. This is the most expensive of the three; however, it may be the most fun. It is open from 10 a.m. until 5 p.m. and it costs \$13.75 for general admission. You can enjoy walking through a giant heart or playing like the big kid you are with the various exhibits they have.

Center City and Old City

Not far from the museums are Chestnut and Market Streets. While shopping does not fit into the budget, the shopping experience is worth mentioning, even if it is just window-shopping. The stores range

from quaint independent shops to the well-known American Outfitters and H&M. There are also many little cafes and pizzerias to stop and get lunch. City Hall and LOVE Park are right around the corner.

In the heart of Philadelphia sits the charming and historic Old City. There, you can visit the Liberty Bell Center and Independence Hall for free. They are both open from 9:30 a.m. to 5 p.m. and are located on Market Street between 5th and 6th Streets. For \$2 with a student I.D., you can visit the Betsy Ross House and experience what it was like to live during the birth of our nation. Audio tours are available for only \$4. It is open from 10 a.m. to 5 p.m.

On 2nd Street, one block from the Betsy Ross House, is a slew of art galleries. Most of which are free. The Clay Studio on N. 2nd Street focuses on handmade and crafted ceramics as well as mosaics and multimedia art. The F.A.N. Gallery, found on 221 Arch St., is also a popular gallery that focuses more on painting and drawings. The Art Star is a store and gallery focused on new upcoming contemporary artists. Open from 11 a.m. to 7 p.m. on Tuesday through Saturday, this innovative store and gallery allows you to experience quality art that has vibrancy and life. It is located in a Northern Liberties shopping center on N. 2nd Street, a direct walk up 2nd from The Clay Studio.

South Street

South Street, which is not far from Old City, is a place full of people and culture. It is the place to be, encompassing everything from the interesting to the outright odd: diverse clothing stores, music and poster shops, and even sex and lingerie stores. One of the most popular stores is Imagine, which specializes in homemade T-shirts, hand-knitted mittens, and a variety of socks, body jewelry, and hair accessories. It is between 3rd and 4th Streets. Across the street you will find Mineralisite, a store that specializes in an array of religious and philosophy paraphernalia, while also carrying trinkets and jewelry. There are also many vintage and thrift stores located on South Street. The most

popular is Retrospect, which carries furniture, clothing, books and more. It can be found between 5th and 6th Streets. Along with fun vintage stores there are also many independent record shops, like Repo Records, which is next door to Retrospect, and Relapse Records found off of 6th Street. These stores often carry used CDs that cost anywhere from \$3 to \$10. There are so many specialized and interesting stores that it is a great place to just go exploring.

All the adventuring may make you hungry, and there are plenty of cheap places to stop and get some grub. Jim's Steaks, found on the corner of South and 4th, is one of Philly's finest cheesesteak joints. Their sandwiches, not small by any means, cost no more than \$6 and are well worth it. Just a bit of warning: know what you want to order before you get in line or these Philadelphia cooks will ignore you completely.

Straight across the street from Imagine is a pizza place so small you might miss it: Lorenzo and Son. A slice of pizza bigger than two regular slices at any other pizzeria only costs \$2. Lorenzo's may be small, but its wonderful pizza makes it one of the busiest places on South Street. One block down from Lorenzo's is a place called Maoz, which serves vegetarian falafel. If you want to enjoy something different, it is the place to go. For about \$5 you can enjoy a falafel pita sandwich and homemade fries, both are made right in front of you, plus a drink of your choice.

If you would like to sit down and eat, Johnny Rockets is perfect. It is styled after a '50s restaurant and has all-American food. It is slightly more expensive than the places mentioned above, but the food and the experience are worth it. They play oldies all day long and every once in a while, when the right song comes on, the staff stops what it is doing and dances to the music.

Philadelphia has a huge variety of things to experience and you can do them all even if you're digging in your pockets for some extra change. Whether you decide to experience Old City, the museums, South Street, or all three, it's well worth the trip.



www.wikimedia.org

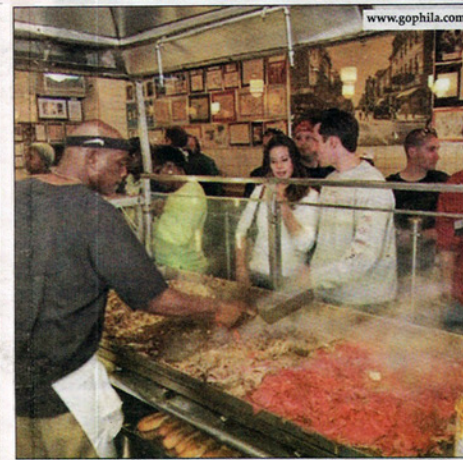


www.gophila.com

Above - The iconic LOVE Park is located in JFK Plaza, on the eastern end of the Benjamin Franklin Parkway and across from City Hall. Left - The Mutter Museum features exhibits that display human oddities. This exhibit is meant to showcase unusually shaped skulls, reasons for their abnormal shape and their origins. Bottom - The Philadelphia Museum of Art, or rather its steps, were made famous when Sylvester Stallone triumphantly bounded up them in "Rocky."



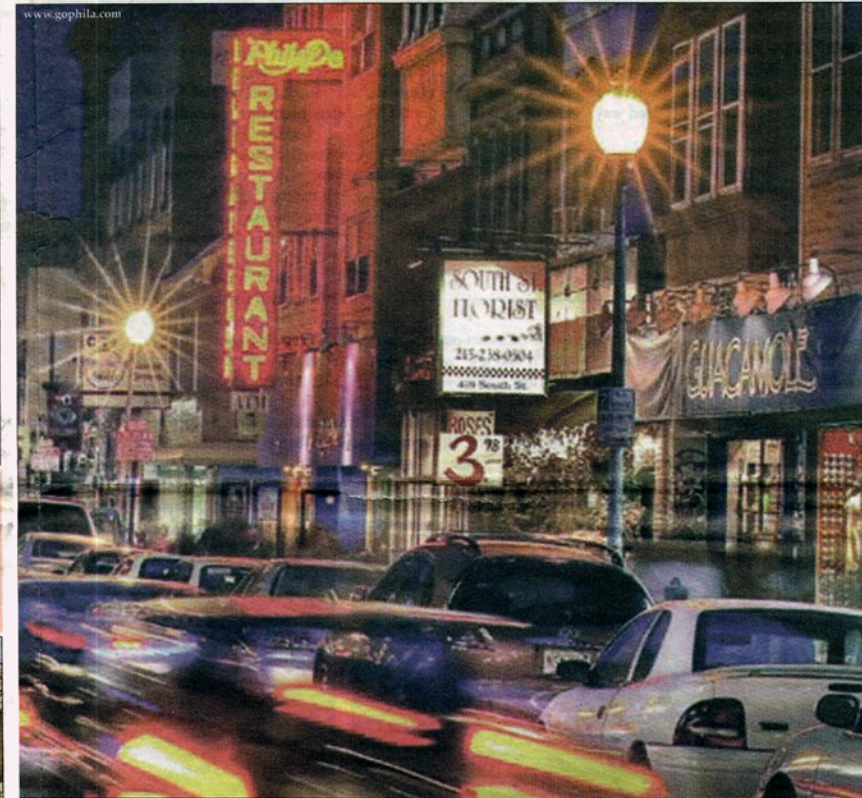
www.widener.edu



www.gophila.com



www.historycooperative.org



Top Left - Jim's Steaks serves up some of the most delicious cheesesteaks found in the city. Seeing as cheesesteaks are nearly synonymous with Philadelphia and not to be missed, you might as well eat the best. Top Right - The National Constitution Center, located on Arch Street, is currently featuring a special exhibit on the nation's first ladies. Find more information about it and directions to the center at www.constitutioncenter.org. Bottom - Despite its reputation for dive bars and sex shops, South Street also offers a multitude of vintage shops, boutiques and eateries.

How to get THERE, get AROUND and get HOME

By Calista Condo
Photo Editor

The first part of your day has to start with the commute to the City of Brotherly Love.

By Car

If you want to drive you will be paying for gas, a \$3 toll to cross the bridge, and meter or lot parking.

Parking is often hard to find and people usually decide to use parking garages, which can be very pricey. They range from \$7 to \$20. If you are traveling with four or more people, everyone can split the fee for

parking, tolls, and gas.

Meter parking only costs 25 cents for 20 minutes, but most spots only offer two-hour parking. Driving is a good idea if you plan to go from one area of the city to another, but Central City Philadelphia is small and easy to walk.

By Bus

The bus is another option. It only costs \$4.25 to go from a stop in Glassboro to Center City Philadelphia. This is a better idea when only two people are planning to go. For bus schedules and other information, visit www.njtransit.com.



www.septa.org

According to their website, the Southeastern Pennsylvania Transportation Authority (SEPTA) provides public transportation services in Bucks, Chester, Delaware, Montgomery and Philadelphia County, with selected rail service to the State of New Jersey and Delaware.

Buses stop at most major street corners in Philadelphia. The cost is usually \$2 no matter your destination. For schedules go to www.septa.org

By Train

Another alternative to driving are the PATCO trains, or what some call the "speed line." You can get a round-trip ticket to Philadelphia for only \$4.90. The only problem with taking the train is that there are only four stops in Philadelphia. Septa also offers \$2 subway transportation to many popular locations within the city.

By Foot

Walking is the main way to get around. It is not a far walk from South Street to Old City or anywhere in between. If you don't feel like walking, there are always the cabs. According to Philadelphia Taxi's website, cab fare starts at \$1.80 and every additional mile is 60 cents.

